

Welcome to A Level Fine Art

Dear Art students,

The following is a general guide to the beginning of Component 1 Year 12, incorporating Year 11 bridging work..

The theme you will be exploring at the start of year 12 is

'MECHANICAL BOTANICAL'

A fusion of the manmade and natural world. In term 1 you will be working in a range of mediums and styles to present your perspective on this topic whilst learning new skills and improving on existing ones.

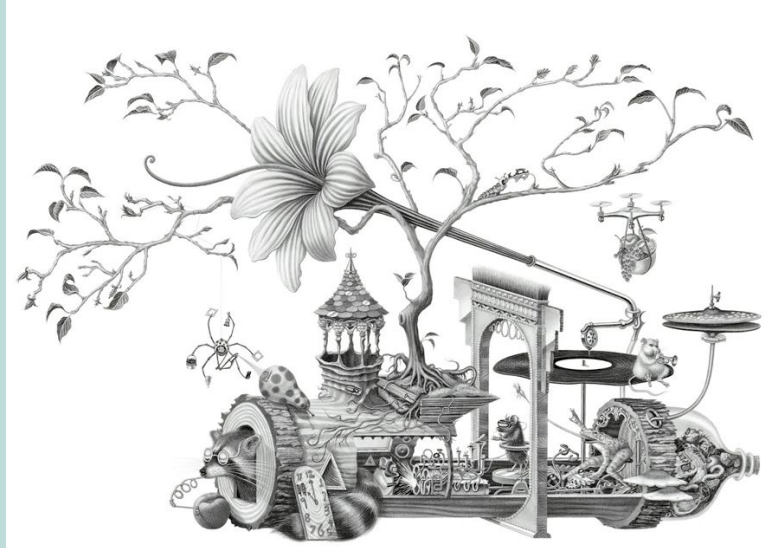




VINTAGE BOTANICAL MOODBOARD & SCENE CREATOR



MECHANICAL - BOTANICAL



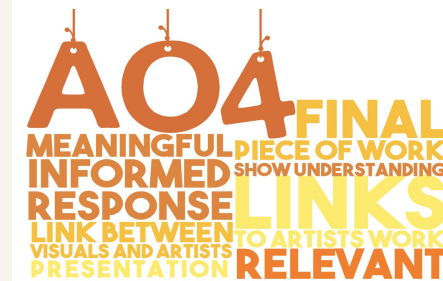
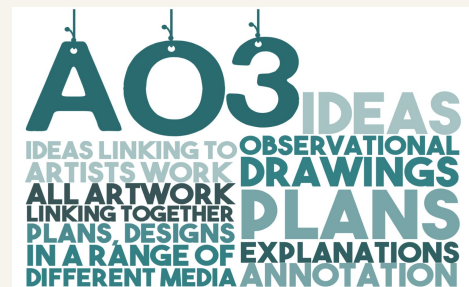
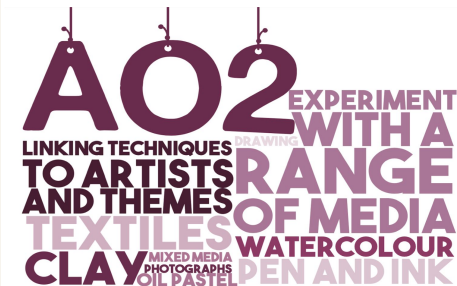
Course Information

AQA Exam board: 'Students are required to conduct a practical investigation into an idea, issue, concept or theme. The focus of the investigation must be identified independently by the student and must lead to a finished outcome or a series of related finished outcomes. The investigation should be a coherent, in-depth study that demonstrates the student's ability to construct and develop a sustained line of reasoning from an initial starting point to a final realisation. The investigation must show clear development from initial intentions to the final outcome or outcomes. It must include evidence of the student's ability to research and develop ideas and relate their work in meaningful ways to relevant critical/contextual materials. To be able to produce sustained work from an initial point to a realisation and include evidence of your ability to research, develop ideas and link your work in a meaningful way to related critical/contextual materials'.

- Observational drawings and your own original photography.
- Research of artists and expressions of your own opinion of their work
- Experimentation with a variety of materials and techniques
- Clear development in your sketchbook and to your final outcomes
- Regular galleries and exhibition visits

You will be expected to:

- Developed ideas through sustained investigations informed by contextual sources, demonstrating analytical and critical understanding.
- Demonstrate different skills in materials, techniques and processes, reviewing and refining ideas as work develops
- Include relevant quality drawings/photographs /final pieces, reflecting critically on work and progress
- Present personal and meaningful responses, showing connections with other artists
- **Assessment:** = Tutorials throughout the year/presentations/sketchbook submission & 15 hour exam



Assessment objectives (AOs)	Component weightings (approx %)		Overall weighting of AOs (approx %)
	Component 1	Component 2	
AO1	15	10	25
AO2	15	10	25
AO3	15	10	25
AO4	15	10	25
Overall weighting of components	60	40	100



Component 1:

Personal investigation with a 1000-3000 word supporting essay

Component 2:

Externally Set Exam questions.
Released 1st February 2025

Equipment list

- An A2/A1 waterproof Art case
- A good quality A2 cartridge sketchbook
(available from Presdales Art staff costing £6.50 when back in school)
- A variety of sketching pencils
- Good quality watercolour paints
- Set of acrylic paints (Primary colours, black & white)
- Set of brushes
- Pritt stick
- Coloured pencils
- Fine liners
- White pens



Course Info

Trips

Year 12 Art Workshops off timetable for the day, Autumn term
Year 12 Gallery visits for personal projects, Summer term

Prefects

You can nominate yourself to become an art Prefect, and become an Art ambassador to the younger years. You can get involved in running KS3 Art clubs, support the department On open evenings and write blogs etc.

Artist of the Month

Every month students are selected and awarded a prize for 'Artist of the month'

1.1 Feedback & tutorials

You will be getting lots of feedback from your teachers, on a 1.1 tutorial basis

Presdales Art Student Alumni

Take a look at our alumni display board in A2 and creative careers board in A3 to see the wide range of career opportunities and higher education creative courses

More information can be found here:

<https://drive.google.com/file/d/1XFZfq3MSviEzzV0Anem6cxyh7pUtNeKQ/view?usp=sharing>

Former Presdales Students



Courses and Careers in Art

Follow us on Instagram: presdalesartphotography



Y12 A Level Art

Bridging work

Task

You need to complete 5/6 pieces of work relating to the theme **'Mechanical Botanical'**

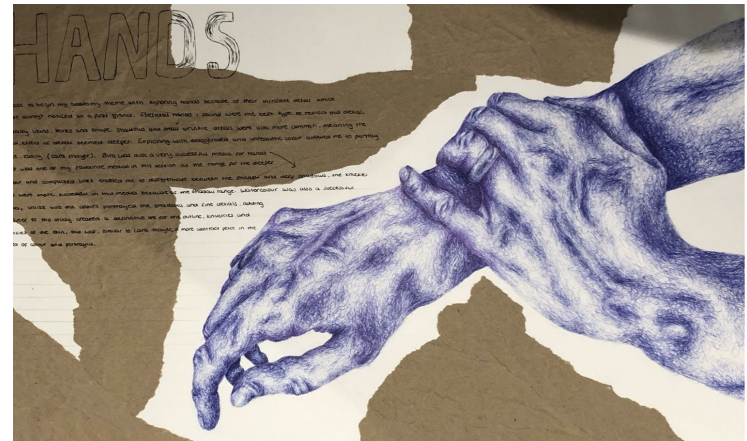
Each drawing (see tasks below) has a specification for the medium, theme and focus of the artwork e.g. 'Zoom in'

Your drawings can be any size, all 10 the same or a range of sizes. They can be produced on paper, cardboard, wood or mount board, used and found papers and materials

They will be presented together at the start of Year 12

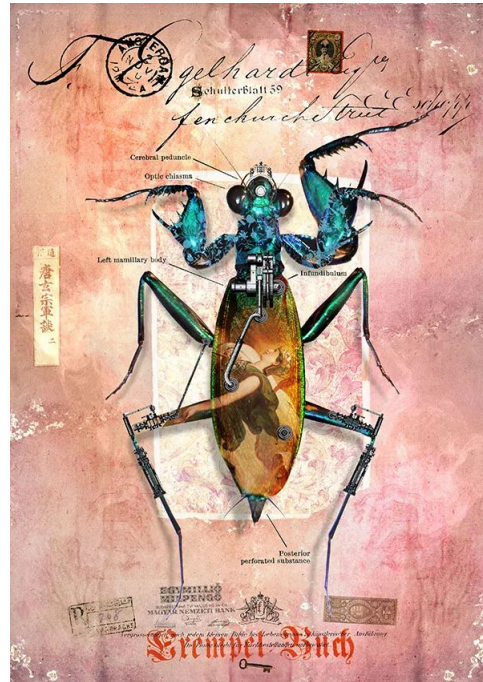
You should experiment with mediums, try new things, take risks. They can be created with speed and fluency or with precision over a sustained time period, It's up to you!

AO2 EXPERIMENT
DRAWING WITH A
LINKING TECHNIQUES TO ARTISTS AND THEMES RANGE
OF MEDIA
TEXTILES WATERCOLOUR
CLAY MIXED MEDIA PHOTOGRAPHS OIL PASTEL PEN AND INK



Andre Sanchez

Born in Bordeaux, artist André Sanchez moved to Paris in 2000 and started to focus on photography, graphic design, and collage. He learned digital photography on the job and played around with all the possibilities it offered him. Image processing, effects, and post-production software... He experimented and created original artworks to the point that, soon, what had begun as a pastime became a passion and, over the years, a career in its own right. On the borders between photography and graphic design, his style has taken galleries by storm in the four corners of Europe (Paris, Amsterdam, London, Barcelona, and Brussels) and has drawn the attention of numerous clients, including some famous publishing houses (including Grasset, Payot & Rivages, Condé Nast, and Robert Laffont) and prestigious magazines (Le Monde, Psychologies Magazine, Rolling Stone, Libération, The Sunday Telegraph, The Sunday Times).

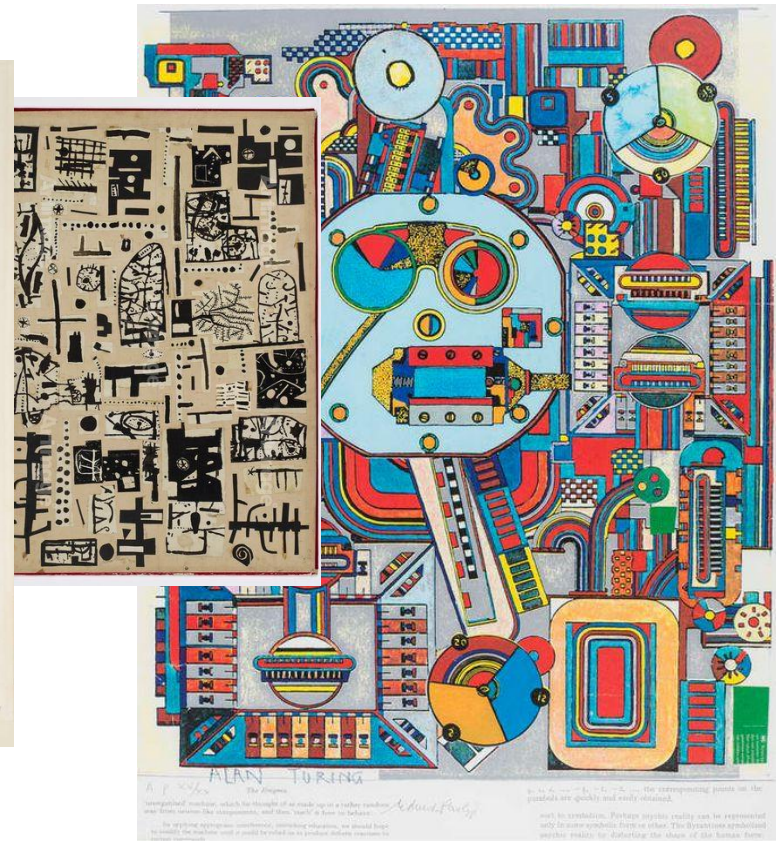
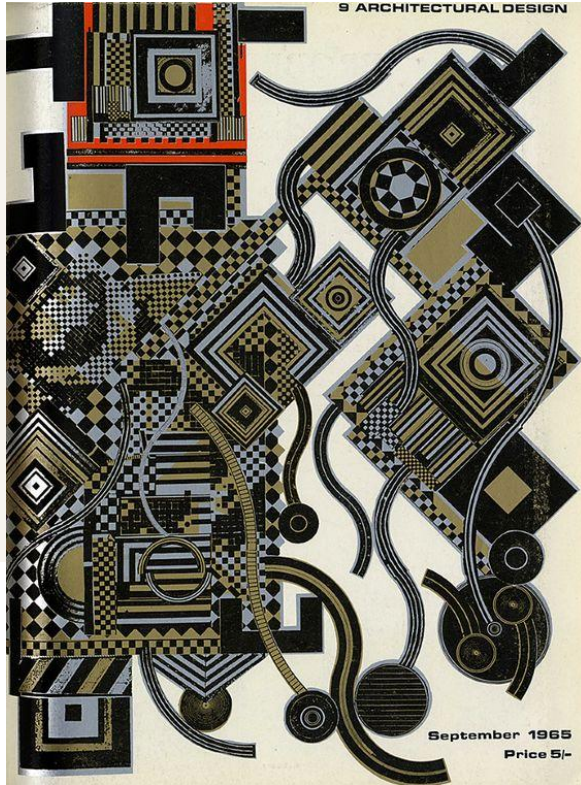


Michael Mew



Michael Mew creates mixed media collage paintings that frequently focus on botanical subjects (other times, he focuses on toys and other ephemera of modern society). Michael explains how growing up in a suburb of Los Angeles affected his choice to employ found objects as collage materials. He says that the alleyways that ran between houses for trash pick-ups "afforded the opportunity to explore. My wanderings took place as I walked the alleys studying the cast offs and picking up discards." Later, his "adult indulgences" turned to flea markets. "It was these finds that I used to combine and create assemblage art, which has now been transposed into my current collage work."

Eduardo Paolozzi



Eduardo Paolozzi was born on March 7, 1924, in Edinburgh, United Kingdom. From childhood he collected **ephemera—science-fiction magazines, discarded toys, and other objets trouvés**—which became the basis for a lifelong fascination with repurposing found objects and images in his art.

Eduardo Paolozzi and The Rise of the Machines

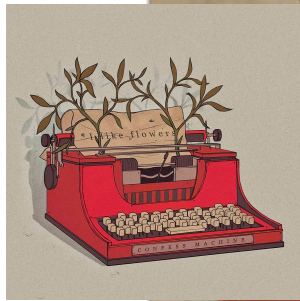
Even in the 1940s Eduardo Paolozzi viewed machines and our ever-increasing reliance on technology as something to be feared. Though they would pop up in his artworks as luxurious if somewhat ludicrous domestic appliances, more often than not they appeared as violent and dispassionate tools of authority (think more Terminator than Henry the Hoover)

Drawing 1
Induction week: Michael Mew Inspired outcome

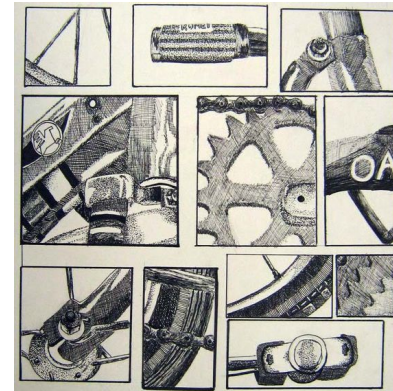
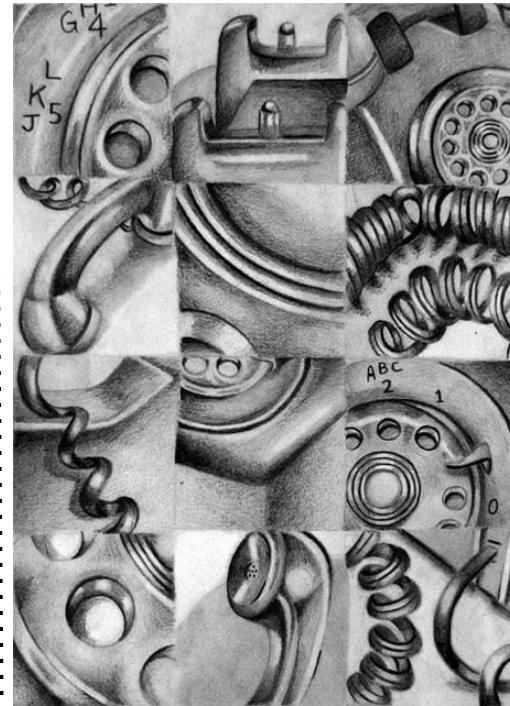
Medium: Mixed Media

Theme: Mechanical

Botanical



Drawing 2
Pencil Study
Zoom in
'Mechanical'



Drawing 3 **'Detail'**

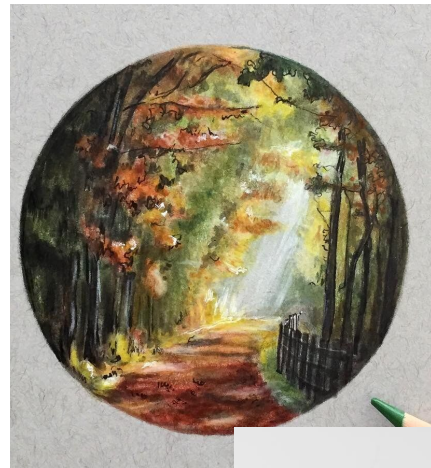
Medium: Biro Pen
Theme: Botanical



Drawing 4

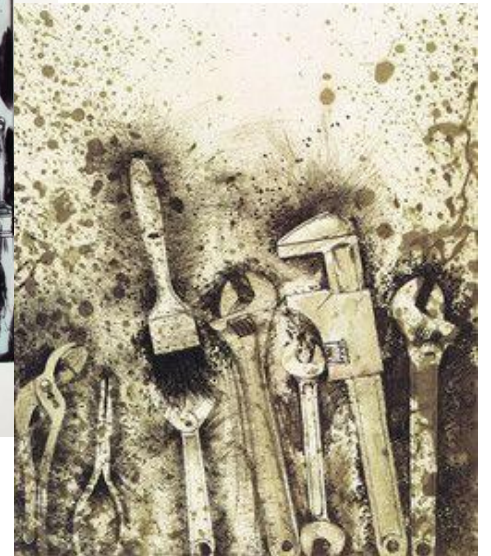
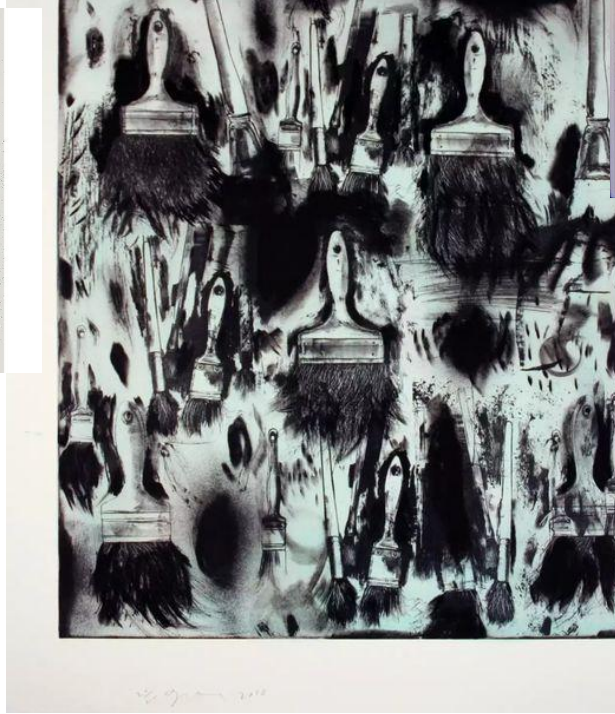
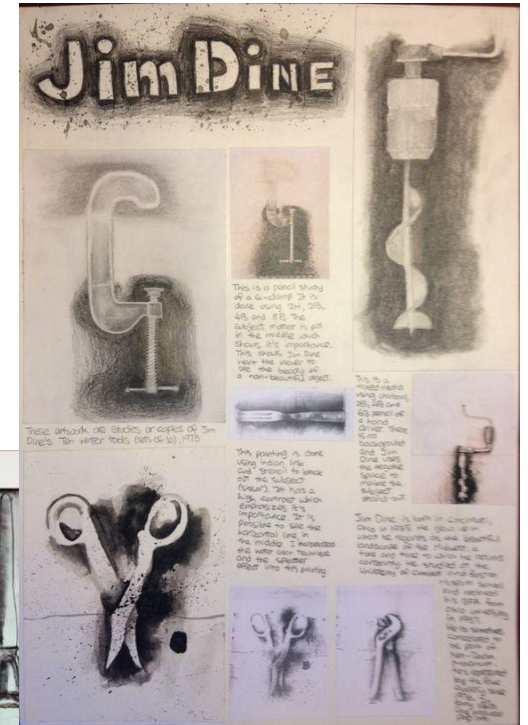
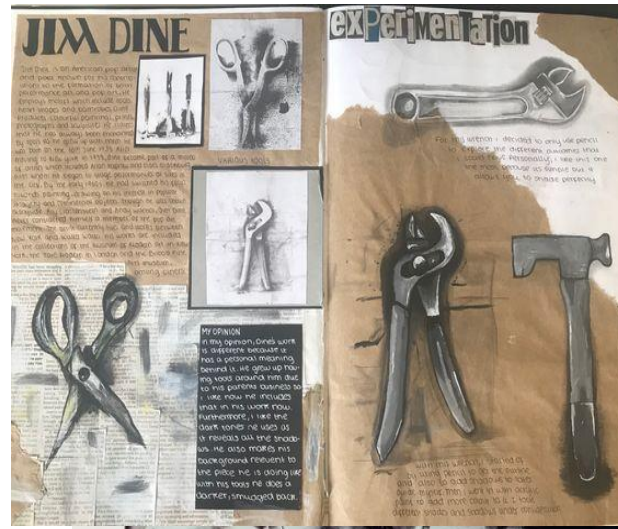
Work within a shape

Medium: Coloured Pencil
Theme: Mechanical



Tomokazu Matsuyama

Jim Dine

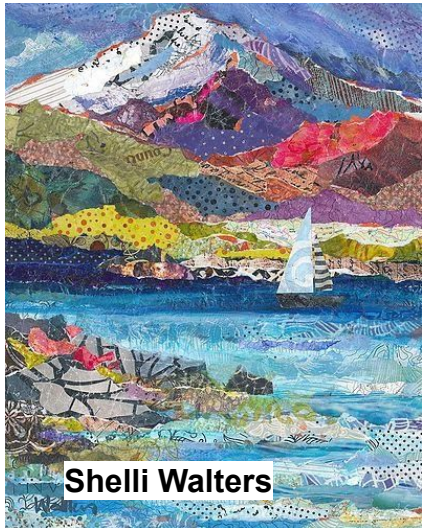


Jim Dine is an American artist whose oeuvre extends over sixty years. Dine's work includes painting, drawing, printmaking, sculpture and photography; his early works encompassed assemblage and happenings, while in recent years his poetry output, both in publications and readings, has increased.

Drawing 5
A 'view' to admire

Medium: Collage

Theme: Botanical



Shelli Walters



Suzanne Siegel



Drawing 6
Repeat Pattern

Medium: Layered Papers & Mixed Media

Theme: Botanical



Yellena James



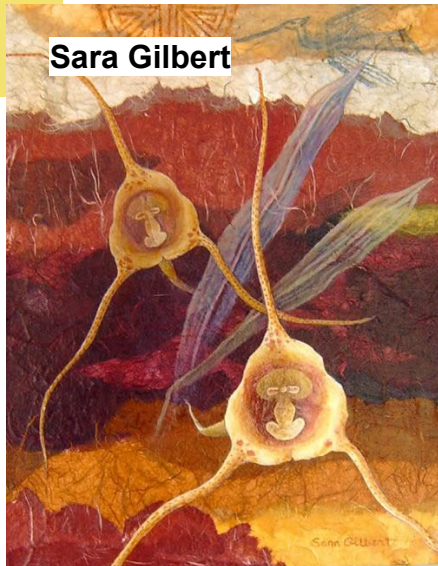
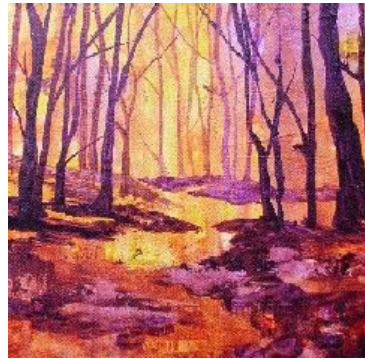
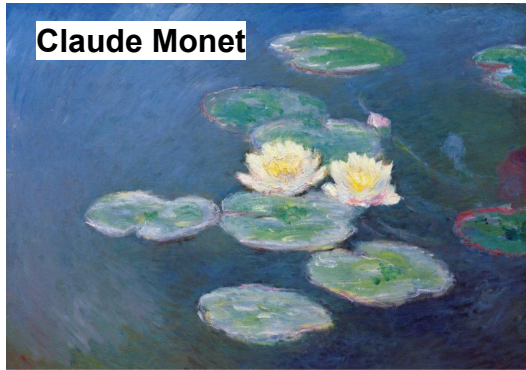
William Morris



Hannah Rampley

Drawing 7
Limited colour palette

Medium: paint
Theme: Mechanical



Drawing 8
Extend an image

Medium: paint
Theme: Mechanical



Drawing 9

Drawing or painting on a found object

Medium: Found Objects

Theme: Botanical



Jayne Stokes



Drawing 10

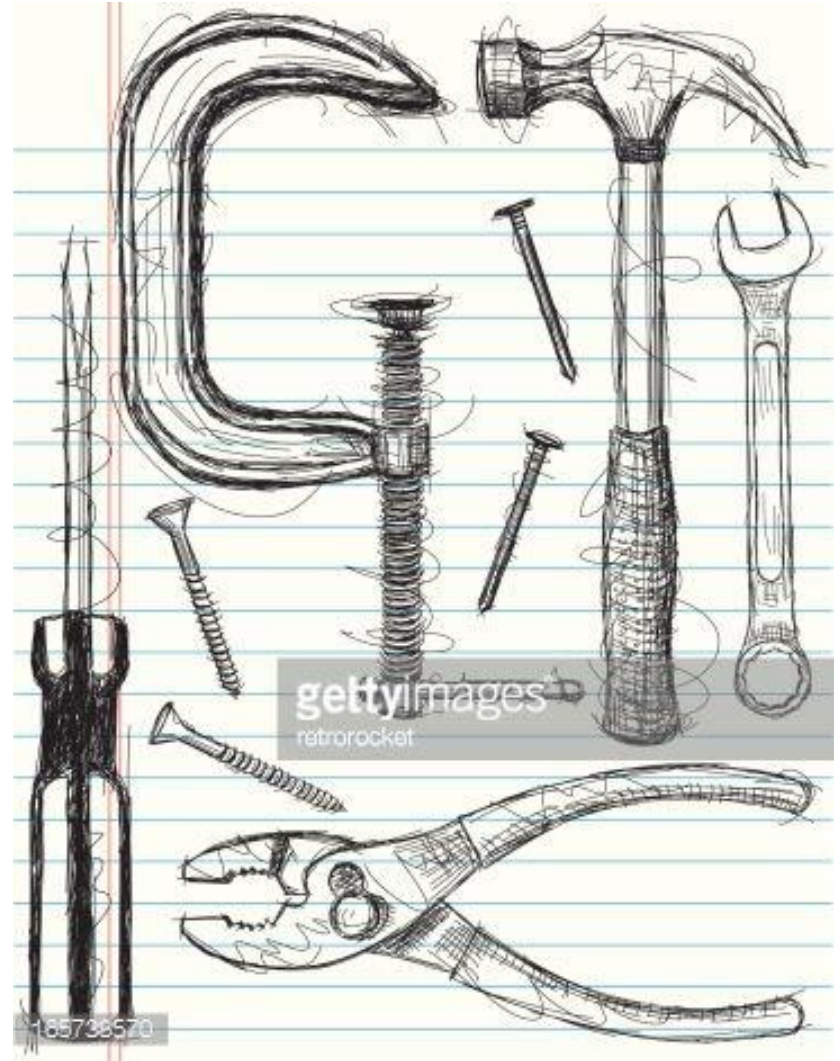
You choose

Medium: Up to you

Theme: Surprise us!



Inspiration



Drawing styles / backgrounds



