



SUSTAINABLE LIVING PROJECT

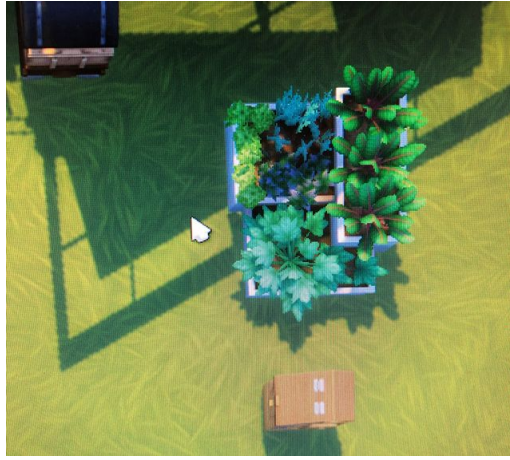
By Poppy Higgs

DESIGN OF HOUSE:

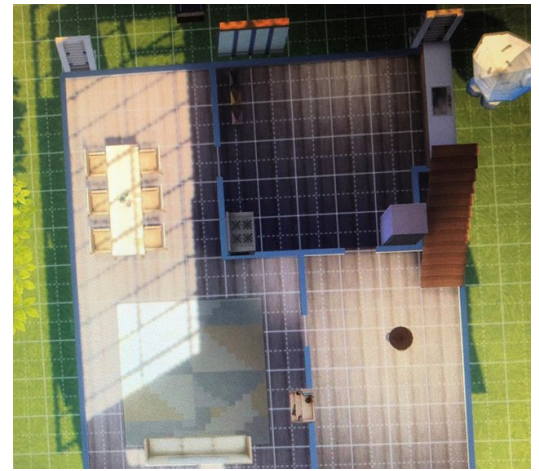
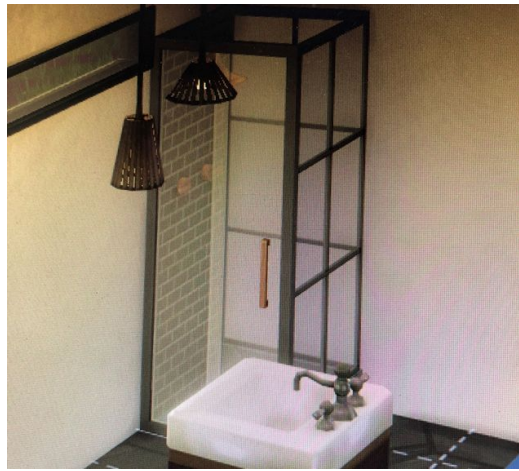
I DESIGNED MY SUSTAINABLE HOUSE SO THAT IT IS MAXIMIZING THE POTENTIAL OF THE SPACE. IT IS ALSO SUSTAINABLE, ECO FRIENDLY, ENERGY EFFICIENT AND MADE OF OF REUSABLE MATERIALS, FOR EXAMPLE THE CONCRETE USED TO MAKE THE HOUSE IF MADE ENTIRELY OUT OF RECYCLED PLASTIC AND RUBBISH. THIS NOT ONLY REDUCES GREENHOUSE GAS EMISSIONS, BUT REDUCES WEIGHT AND PROVIDES USE FOR LANDFILL-CLOGGING PLASTIC WASTE.



EXTERIOR OF HOUSE:



INTERIOR OF HOUSE:



HOW IS MY DESIGN SUSTAINABLE:

MY DESIGN IS SUSTAINABLE AS IT REUSES MATERIALS, STOPS LANDFILL, REDUCES WASTE, IS ENERGY EFFICIENT AND ENCOURAGES RECYCLING. THE DESIGN USES A COMBINATION OF SOLAR AND WIND POWER AND DOES NOT USE ANY FOSSIL FUELS YOU CAN SEE THEM ON THE ROOF OF THE BUILDING. NEXT ALL THE MATERIALS THAT WERE USED TO BUILD IT AND DECORATE IT ARE REUSABLE, E.G. THE CONCRETE THE LIGHT ARE MADE OUT OF REUSED MATERIALS, THE PLANT POTS AND LOTS MORE. SO THAT WE DON'T WASTE WATER THERE IS A SMALL RAINWATER COLLECTOR AT THE SIDE OF THE HOUSE AND ALL THE PLANTS IN THE HOUSE ARE WATERED WITH TREATED SEWAGE. THE RECYCLING BINS IN THE HOUSE ARE DECORATED PRETTY COLOURS TO MAKE YOU WANT TO RECYCLE. THERE IS A DECIDUOUS TREE TO THE SIDE OF THE HOUSE WHICH ALLOWS THE SUN LIGHT IN DURING THE WINTER WHEN THE SUN IS LOW AND BLOCKS SUNLIGHT FROM COMING IN IN THE SUMMER.

HOW IS MY DESIGN SUSTAINABLE CONTINUED:

THERE ARE LOTS OF PLANTS INCLUDED IN MY DESIGN AND TO TAKE ADVANTAGE OF SPACE I HAVE USED VERTICAL PLANTERS THAT HANG OFF THE WALL. THERE ARE ALSO FRUITS AND VEGETABLES BEING GROWN OUTSIDE SO THAT THE PERSON THAT LIVES THERE DOES NOT HAVE TO DRIVE TO A SHOP A LOT WHICH REDUCES POLLUTION AND IT ALSO SAVES PACKAGING.

THERE WERE LOTS WINDOWS INCLUDED IN THE HOUSE WHICH ARE MADE OUT OF RECYCLED GLASS. THESE MAXIMISES THE LIGHT COMING IN AND ALLOWS MORE HEAT INTO THE HOUSE HEATING IT UP MORE AND RESULTS IN LESS TO NO HEATING BEING USED.

THE END