

😊 OUR
SUSTAINABLE
CITY 😊

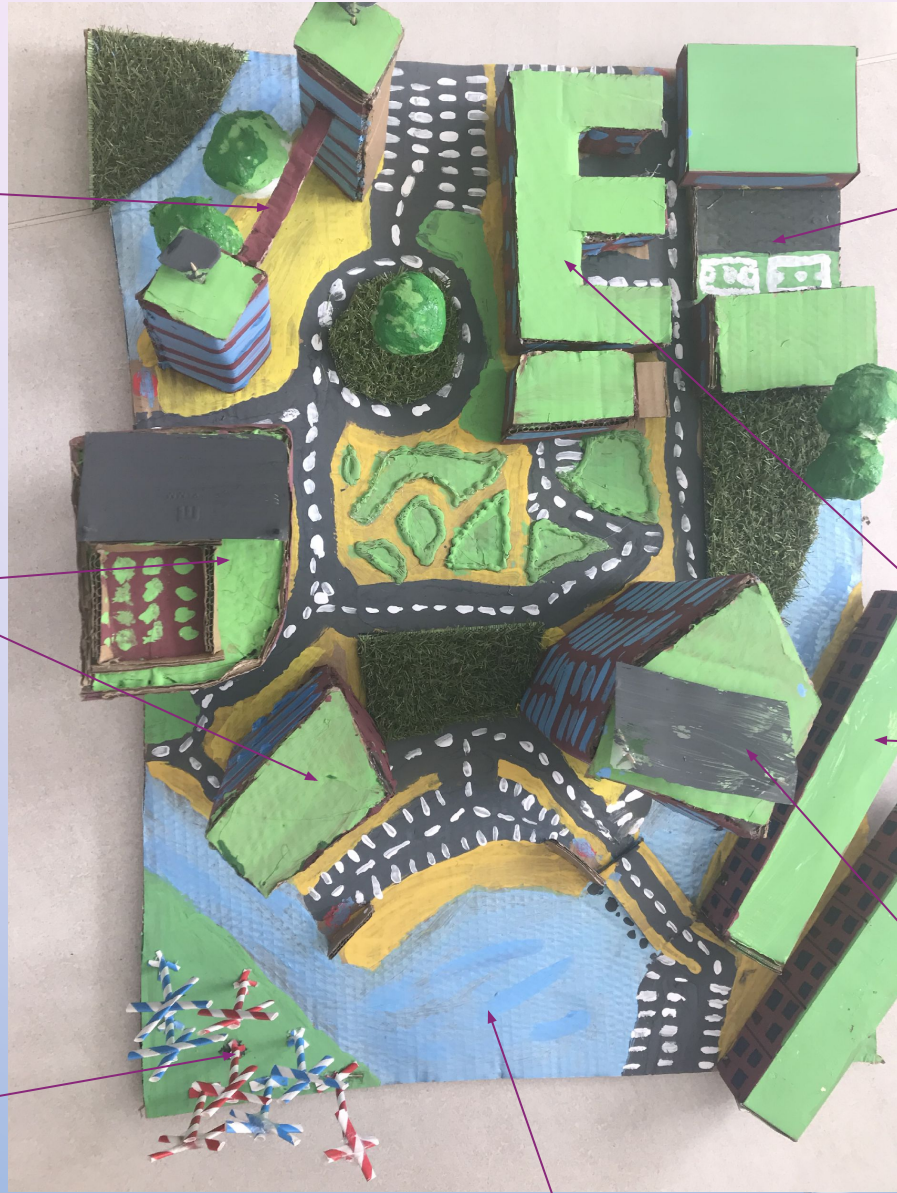
BY LUCY AND EMMA.



Small office blocks

flats

Wind turbines



Swimming lake

Secondary and primary school with football and netball pitches

houses

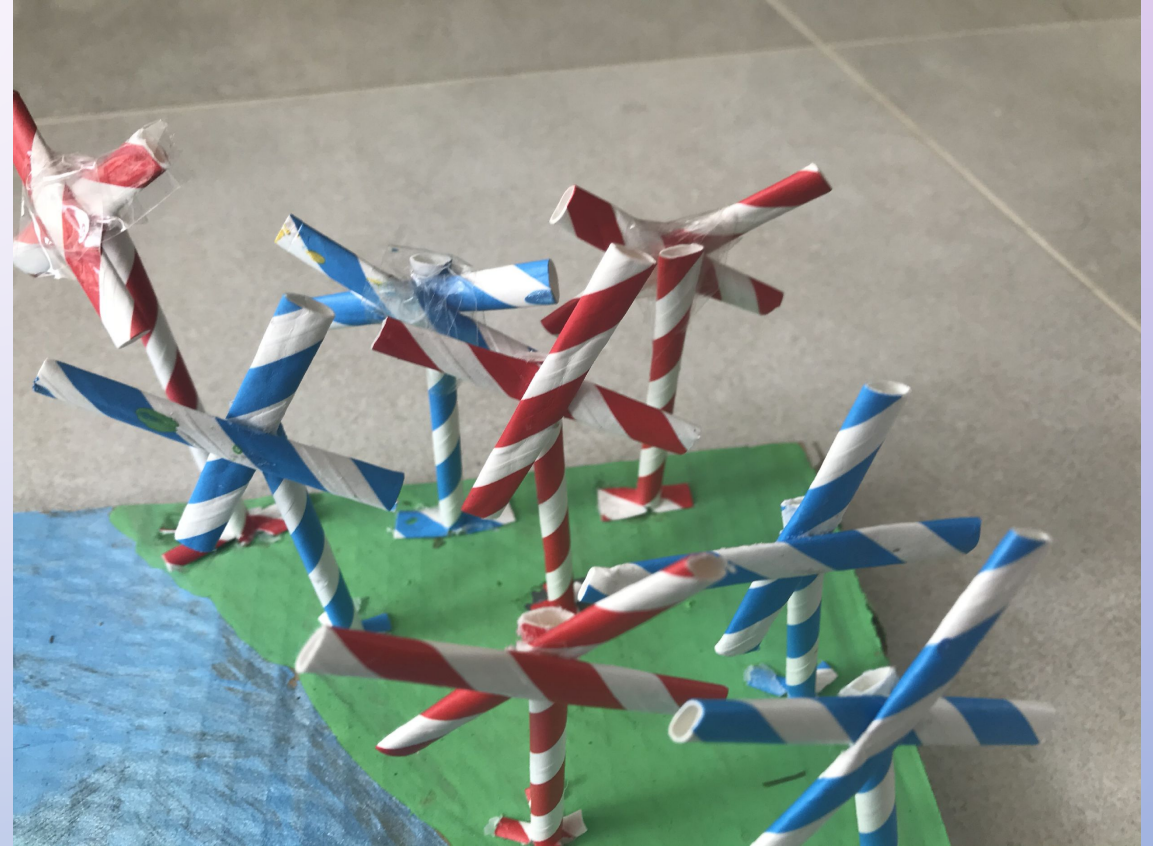
Big office block

**BIRDS EYE
VIEW
OUR CITY IS
VERY
SUSTAINABLE
BECAUSE...**



WIND TURBINES

WE HAVE WIND TURBINES TO
GENERATE ELECTRICITY FOR THE
HOUSES, SCHOOLS AND OTHER
SMALL BUILDINGS.



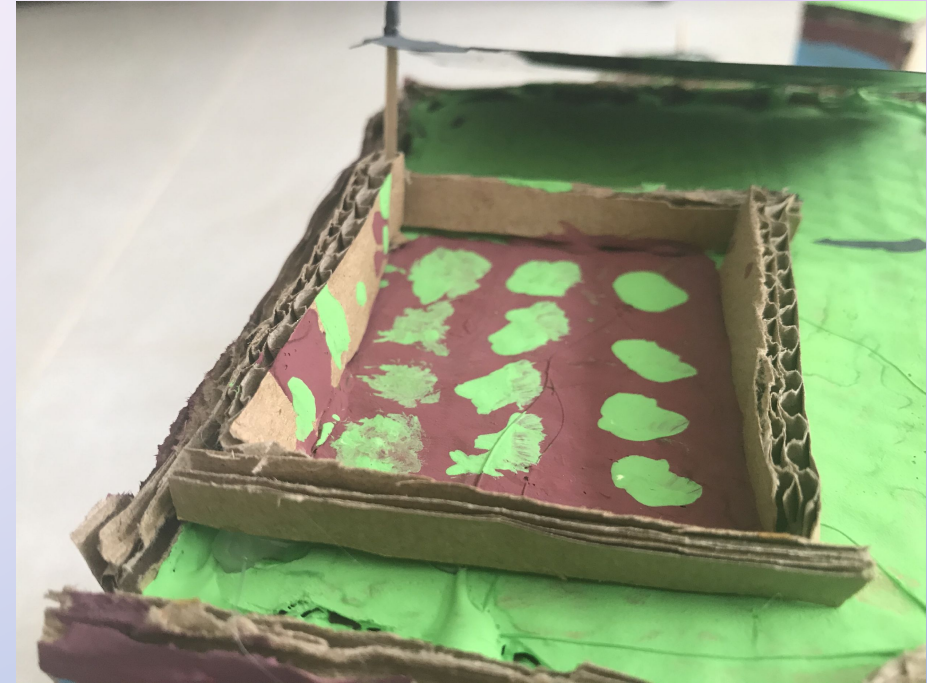
SOLAR PANNELS

THE SOLAR PANELS GENERATE
ELECTRICITY FOR THE FLATS,
OFFICE BLOCKS AND THE
SHOPPING CENTRE



GARDENS

EVERYONE HAS A ROOF TOP
GARDEN SO THEY CAN GROW
THEIR OWN FRUIT AND
VEGETABLES.





GREEN AREAS AND PARKS

WE INCORPORATED LOTS OF GREEN
AREAS AND PARKS THROUGHOUT,
FOR CHILDREN AND FAMILIES TO PLAY
AND EXERCISE IN.

THEY ARE WELL LOOKED AFTER AND
LOTS OF ANIMALS LIVE IN THE TREES
AND BUSHES.



WATER

THE RIVERS AND LAKES ARE ALL CLEAN AND FREE TO SWIM IN JUST LIKE THE SEA. THE BEACH IS ALSO TAKEN CARE OF AND ANYONE WHO LITTERS IS FINED.

FISH AND OTHER WATER CREATURES CAN LIVE IN THE RIVERS TOO.

THE RAIN WATER IS RECYCLED TO BE USED FOR FLUSHING TOILETS AND WATERING PLANTS.



SHOPPING

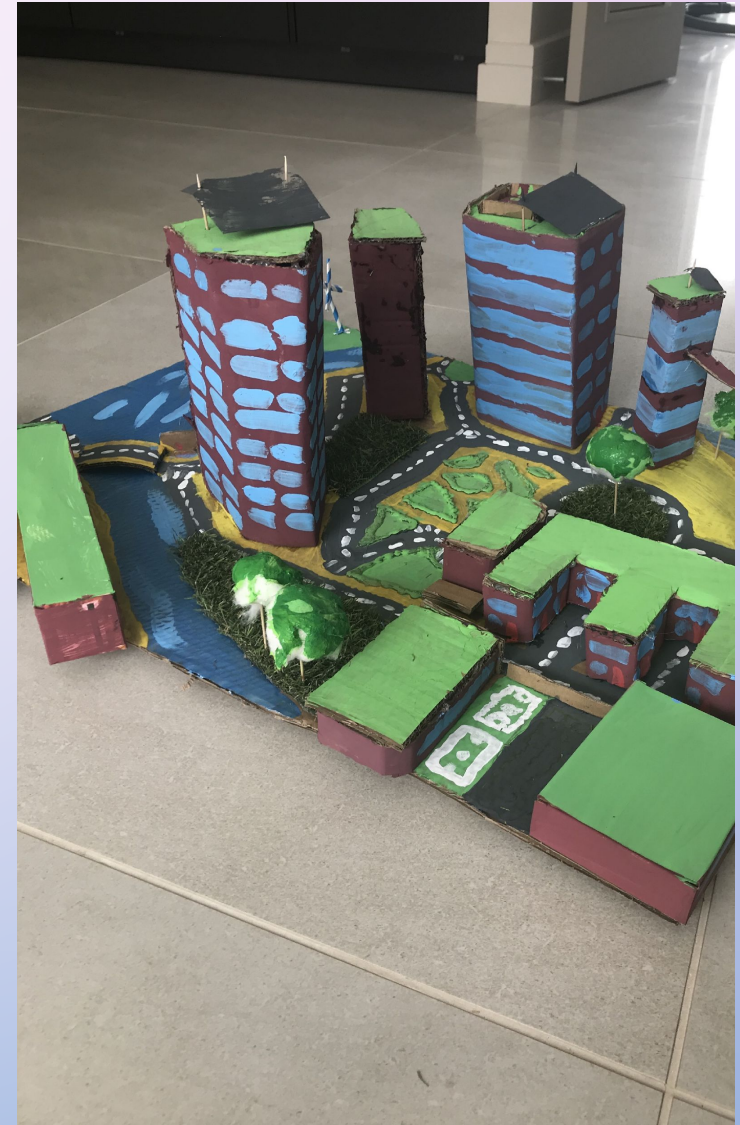
THERE ARE SMALL SHOPS UNDER SOME OF THE FLATS AND OFFICES BUT MOST OF THE SHOPPING HAPPENS IN THE SHOPPING CENTRE.

THE SHOPPING CENTRE USES THE ELECTRICITY FROM THE SOLAR PANELS AND ALL SINGLE USE PLASTIC IS BANNED SO PEOPLE BRING THEIR OWN CONTAINERS AND SHOPPING BAGS.



SCHOOLS

IN SCHOOL YOU HELP YOURSELF TO THE FOOD TO MAKE SURE YOU DON'T LEAVE ANY WASTE. ANY FOOD LEFT AT THE END OF THE DAY CAN BE EITHER COMPOSTED OR IS GIVEN TO THE FOOD BANK IN THE SHOPPING CENTRE.



INSIDE THE HOUSES

The lights in every building turn off when they don't detect any movement in the room but can be manually overridden.

Cardboard, plastic, metal and glass must be recycled or reused.



TRANSPORT

There are plenty of bike routes around the city and people are encouraged to use them.

All cars and buses are electric. There is a colour coded bus system and underground train routes

